

# SWISSDRAIN® 8 12 17 27



## Intelligent drainage mat solution



SWISSDRAIN® 8/12/17/27 mm is a high-grade surface drainage mat providing multidirectional drainage and with a special mesh fabric for incorporation below surfacing in all types of paving/covering structure.

### APPLICATIONS

- For outdoor use
- For natural stone, ceramic and concrete pavings/coverings
- For bound and unbound constructions
- On underground parking decks, warm roofs, inverted roofs and roof constructions without insulation
- On balconies, patios and garden seating areas
- On steps
- For masonry

### PRODUCT FEATURES

- Simple, efficient and reliable installation
- Reliable multidirectional drainage
- High compressive strength
- For pedestrian and vehicular pavements
- Does not sink into bitumen membranes
- Improves impact sound insulation of paving constructions
- Separates paving structure from base
- Classed as protective layer on waterproof membranes under Swiss standard SIA 271 (see "Gebäudehülle Schweiz" association guideline)

### TECHNICAL DATA

- Studded sheet material: perforated polystyrene
- Double fabric material: glass scrim
- Filter nonwoven material: vapour-permeable polypropylene
- Stud height approx. 12, 17, 27 mm

#### Roll form:

<b>SWISSDRAIN 8 mm</b>		<b>Weight details</b>
1.25 m x 32 m roll	40.00 m <sup>2</sup>	8 mm = 36 kg / 0.900 kg/m <sup>2</sup>
<b>SWISSDRAIN 12 mm</b>		<b>Weight details</b>
1.20 m x 32 m roll	38.40 m <sup>2</sup>	12 mm = 44 kg / 1.145 kg/m <sup>2</sup>
<b>SWISSDRAIN 17 mm</b>		<b>Weight details</b>
1.20 m x 30 m roll	36.00 m <sup>2</sup>	17 mm = 42 kg / 1.165 kg/m <sup>2</sup>
<b>SWISSDRAIN 27 mm</b>		<b>Weight details</b>
1.20 m x 20 m roll	24.00 m <sup>2</sup>	27 mm = 35 kg / 1.520 kg/m <sup>2</sup>

### COMPRESSIVE STRENGTHS

SWISSDRAIN 8 mm	Max. area load (kP/m <sup>2</sup> )	568.4
SWISSDRAIN 12 mm	Max. area load (kP/m <sup>2</sup> )	566.9
SWISSDRAIN 17 mm	Max. area load (kP/m <sup>2</sup> )	448.3
SWISSDRAIN 27 mm	Max. area load (kP/m <sup>2</sup> )	466.0

The pavement structures for the individual load classes have been tested to Swiss standards SN VSS 640 480a and 640 482. We should be pleased to provide advice on your project-specific system design.

## IMPACT SOUND REDUCTION

Unbound construction:

21–23 dB, depending on paving material

Bound construction:

16–17 dB, depending on paving material

## DRAINAGE PERFORMANCE

to DIN EN ISO 12958, 2010 edition

Minimum requirement: 0.03 ltr/m.s

Type	Pressure	Unit	1.0%	1.5%	2.0%	2.5%	3.0%
					Swiss VSS standard Fine surface	Swiss VSS standard Rough-faced surface	
8 mm	2 to.	ltr/m.s	0.35	0.53	0.72	0.73	0.88
8 mm	20 to.	ltr/m.s	0.27	0.45	0.64	0.66	0.79
12 mm	2 t	ltr/m.s	0.38	0.56	0.75	0.76	0.91
12 mm	20 t	ltr/m.s	0.30	0.48	0.67	0.69	0.82
17 mm	2 t	ltr/m.s	0.46	0.64	0.98	1.00	1.03
17 mm	20 t	ltr/m.s	0.37	0.53	0.69	0.71	0.92
27 mm	2 t	ltr/m.s	1.91	2.04	2.59	2.75	3.02
27 mm	20 t	ltr/m.s	1.61	1.87	2.36	2.41	2.84

## IMPORTANT INFORMATION

The surfacing design shall comply with the currently effective standards of the relevant country.

As a general rule, the lower drainage level shall be installed parallel to the finished surfacing. The minimum fall shall be maintained. The proper incorporation of drainage mats requires technical expertise and the observance of good practice.

## APPLICATION

Selection of suitable mat:

- On waterproofed surfaces with uniform fall without ponding: SWISSDRAIN 12 mm
- On waterproofed surfaces with uniform fall, though with minor ponding at overlaps in membrane: SWISSDRAIN 17/27 mm.
- Mat height shall be such as to ensure min. 5 mm projection above water level

SWISSDRAIN 8/12/17/27 mm is supplied in roll form.

The base shall be strong and stable with a minimum fall of 1.5%. Protective layers such as crumb-rubber mats and the like shall be removed prior to installation.

The drainage mat shall be loose laid with the mesh fabric side facing upwards. A minimum gap of 1 cm shall be provided at junctions with adjacent building elements.

The projecting 5 cm of mesh fabric serves to form an overlap at joints between mats. After installation of the drainage mat, an upstand strip shall be fixed along junctions with facades and concrete parapets.

Drainage mat strips may be used as an alternative to normal upstands. The bedding material is placed directly on top of the drainage mat. Care shall be taken to prevent the infiltration of bedding material behind or below the drainage mat.

The mat shall be protected against soiling and mechanical damage during the works.

# Channels and gratings



## STAINLESS-STEEL CHANNEL BODY

Art. no. ER100  
Material thickness: 2 mm  
Width: 93 mm  
Height: 100 mm  
Length: 2000 mm  
kg/unit: 11.00



## STAINLESS-STEEL CHANNEL BODY

Art. no. ER50  
Material thickness: 2 mm  
Width: 93 mm  
Height: 50 mm  
Length: 2000 mm  
kg/unit: 8.00



## STAINLESS-STEEL GRATING INSERT

Art. no. CR2000  
Material thickness: 2 mm  
Width: 84 mm  
Height: 20 mm  
Length: 2000 mm  
kg/unit: 4.00



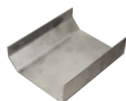
## CAST-IRON GRATING INSERT

Bar design  
Art. no. GRM50  
Black, locking  
Art. no. GRO50  
Non-locking  
Width: 84 mm  
Height: 20 mm  
Length: 500 mm  
kg/unit: 3.50



## EXT. CHANNEL CONNECTOR

Art. no. RVA100  
Material thickness: 2 mm  
Width: 98 mm  
Height: 70 mm  
Length: 125 mm  
kg/unit: 0.42



## EXT. CHANNEL CONNECTOR

Art. no. RVA50  
Material thickness: 2 mm  
Width: 98 mm  
Height: 33 mm  
Length: 125 mm  
kg/unit: 0.29



## CHANNEL END

Art. no. RE100  
Material thickness: 2 mm  
Width: 93 mm  
Height: 100 mm  
Length: 52 mm  
kg/unit: 0.34



## CHANNEL END

Art. no. RE50  
Material thickness: 2 mm  
Width: 93 mm  
Height: 50 mm  
Length: 52 mm  
kg/unit: 0.19



## CHANNEL OUTLET

Art. no. RAS100  
Material thickness: 2 mm  
Width: 97 mm  
Height: 100 mm  
Length: 100 mm  
kg/unit: 0.30



## CHANNEL OUTLET

Art. no. RAS50  
Material thickness: 2 mm  
Width: 97 mm  
Height: 50 mm  
Length: 100 mm  
kg/unit: 0.20



## CHANNEL OUTLET ER 50 + 100

Art. no. RAU50 / 100  
Material thickness: 2 mm  
Width: 98 mm  
Length: 125 mm  
Channel section height: 32 mm  
Spigot height: 50 mm  
Outlet diameter: 60 mm  
kg/unit: 0.40



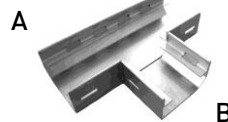
## INTERNAL CHANNEL ANGLE

Art. no. RW50  
Material thickness: 2 mm  
Leg length: 175 mm  
Height: 50 mm  
kg/unit: 1.40



## STAINLESS-STEEL ANGLE GRATING INSERT

Art. no. WESE50  
Material thickness: 2 mm  
Leg length: 175 mm  
Width: 84 mm  
Height: 20 mm  
kg/unit: 0.60  
Set: 2 pcs



## CHANNEL TEE

Art. no. T-RS50  
Material thickness: 2 mm  
Width: 97 mm  
Height: 50 mm  
A length: 253 mm  
B length: 82 mm  
kg/unit: 1.40



## STAINLESS-STEEL GRATING INSERT

Art. no. T-ESRE50  
Material thickness: 2 mm  
Width: 84 mm  
Height: 20 mm  
Length: 253 mm  
kg/unit: 0.60

## Angle trim



### ANGLE TRIM

Art. no. AW  
Height: 67/77 mm  
Length: 2000 mm  
kg/unit: 4.6



### ANGLE TRIM EXTENSION

Art. no. AWA  
Height: 65 mm to 120 mm  
Height-adjustable  
Length: 2000 mm  
kg/unit: 4.6



### ANGLE TRIM CORNER CONNECTOR

Art. no. AWE  
Height: 65 mm  
Length: 50/50 mm  
kg/unit: 0.23



### ANGLE TRIM CONNECTOR

Art. no. AWV  
Height: 65 mm  
Length: 100 mm  
kg/unit: 0.22

## Accessories



### SPACER INSERTS

Width: 30 mm  
Length: approx. 85 mm  
Set with 10 pcs  
– Art. no. PVC E1  
Height: 1 mm, kg/set: 0.21  
– Art. no. PVC E2  
Height: 2 mm, kg/set: 0.22  
– Art. no. PVC E3  
Height: 3 mm, kg/set: 0.23  
– Art. no. PVC E4  
Height: 4 mm, kg/set: 0.24  
– Art. no. PVC E5  
Height: 5 mm, kg/set: 0.25



### ACOFIX

Art. no. AF  
Colour: grey  
Content: 310 ml  
Box: with 12 pcs  
ACOFIX is a fast-curing permanently elastic MS hybrid polymer sealant and adhesive that bonds to a wide range of construction materials. ACOFIX is also approved for food-related applications.



### ACOPRIME

Art. no. AP  
ACOPRIME is a silicone-based adhesion promoter for absorbent bases.



### STEP REINFORCEMENT

Art. no. TA200  
Set with 5 pcs = 10 ml  
Mesh size: 38.4/38.4  
Unit size: 150/200/2000 mm  
kg/set: 2.10



### STAINLESS-STEEL CUTTING DISC

Art. no. ESTS  
Stainless-steel cutting disc for stainless-steel channel



### PERIMETER INSULATION STRIP

Art. no. RDS 10  
Colour: grey  
Height: 10 cm  
Thickness: 10 mm (standard)  
Length: 50 m (roll)  
Perimeter insulation strip with self-adhesive base



### PERIMETER INSULATION STRIP

Art. no. RDS 15  
Colour: grey  
Height: 15 cm  
Thickness: 10 mm (standard)  
Length: 50 m (roll)  
Perimeter insulation strip with self-adhesive base

